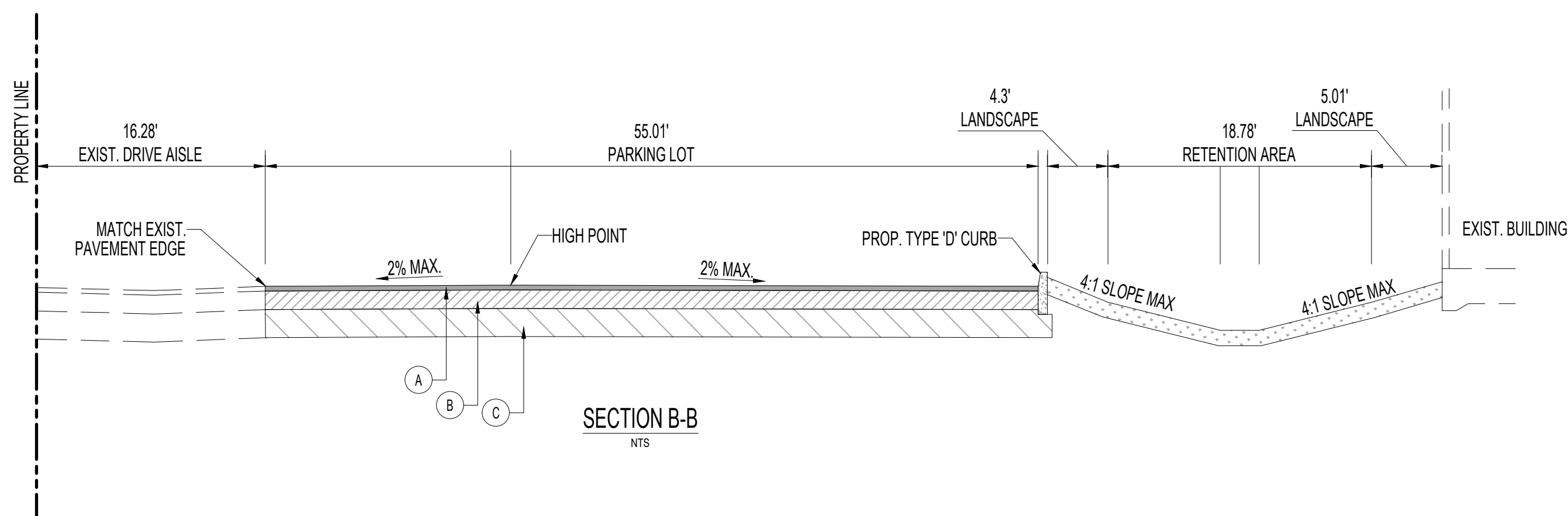
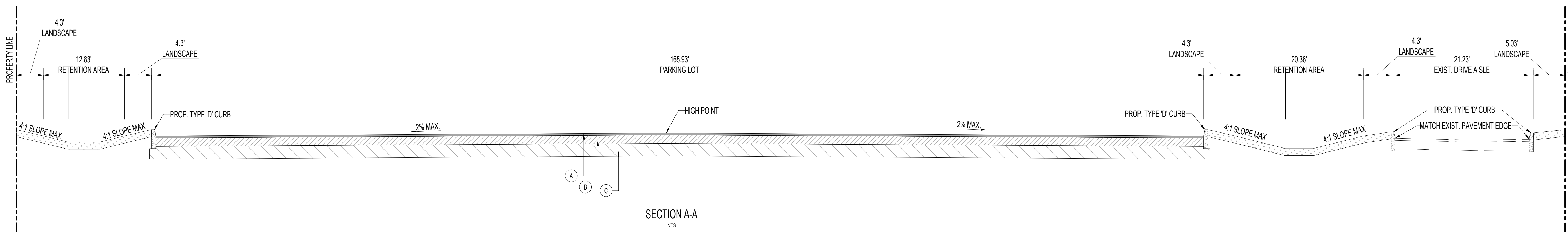


KEY MAP



- PVMT. LEGEND

- | | | |
|---|----------------------------------------------------------------------------------------------------------------------------------------------------------------------------------------------------------------------------------------------------------------------------------------------------------------------------------------------------------------------------|--|
| A | <p>WEARING SURFACE: (ASPHALT AREAS ONLY)</p> <p>INSTALLATION OF THE 2.0" ASPHALTIC CONCRETE SURFACE COURSE SHALL CONFORM WITH THE REQUIREMENTS OF THE FLORIDA DEPARTMENT OF TRANSPORTATION STANDARD SPECIFICATIONS FOR TYPE SP-9.5 ASPHALTIC CONCRETE, AND SHALL BE CONSTRUCTED WITH (2) LIFTS OF 1.00" SP-9.5 ASPHALTIC CONCRETE WITH TACK COAT BETWEEN LIFTS.</p> | |
| B | <p>LIME ROCK BASE: (ASPHALT/VEHICULAR PAVERS AREAS)</p> <p>LIME ROCK BASE COURSE MATERIAL FOR PAVED AREAS SHALL BE A MINIMUM 8" THICKNESS AND COMPACTED TO 98% MAXIMUM DRY DENSITY PER AASHTO T-180 (LBR 100). OTHER SUBSTITUTES SHALL BE PER FDOT SPECIFICATIONS AND PROVIDE EQUIVALENT STRUCTURAL NUMBER AS ABOVE (MIN LBR 100).</p> | |
| C | <p>SUB-GRADE: (2") STABILIZED SUB-BASE COMPACTED TO 98% OF MAX. DRY DENSITY PER AASHTO T-180 (MIN LBR 40).</p> | |

DATUM NOTE:
ALL ELEVATIONS SHOW HEREON ARE IN FEET AND ARE BASED
ON THE NORTH AMERICAN VERTICAL DATUM OF 1988 (NAVD).

[illegible]

Sunshine 811

Call 811 or visit sunshine811.com two full business days before digging to have buried facilities located and marked.

| | |
|--------------|------------------|
| PROJECT No.: | F250001 |
| DRAWN BY: | CAD |
| CHECKED BY: | MAT |
| DATE: | 02/24/2025 |
| CAD I.D.: | F250001-SECTIONS |

PROJECT:

**980 SW 12th AVE.
POMPAN0 BEACH**

— FOR —

**JOEFRAN
INVESTMENTS, LLC**

POMPAN0 BEACH
FLORIDA

THOMAS
ENGINEERING GROUP

6300 NW 31ST AVENUE
FORT LAUDERDALE, FL 33309
PH: (954) 202-7000
FX: (954) 202-7070
www.ThomasEngineeringGroup.com

RYAN OSCAR THOMAS

PROFESSIONAL ENGINEER
FLORIDA LICENSE No. 53891

August 12, 2025
FLORIDA BUSINESS CERT. OF AUTH. No. 27528

SHEET TITLE:

CROSS SECTIONS

SHEET NUMBER:

C-12